

MANUAL IDENTIFICATION

Model Number: 8552B
 Date Printed: June 1974
 Part Number: 08552-90088

This supplement contains important information for correcting manual errors and for adapting the manual to instruments containing improvements made after the printing of the manual.

To use this supplement:

Make all ERRATA corrections

Make all appropriate serial number related changes indicated in the tables below.

Serial Prefix or Number	Make Manual Changes
1431A	1
1437A thru 1437A07510	1,2
1437A07511 thru 1437A07660	1-3
1505A thru 1505A07960	1-4
1505A07961 thru 1505A08160	1-5
1505A08161 thru 1505A08960	1-6
1505A08961 thru 1505A prefix	1-7

Serial Prefix or Number	Make Manual Changes
1613A	1-8
1616A	1-9
1650A	1-10
1714A	1-11
1736A and 1752A	1-12
1841A	1-13
1923A	1-14
1935A	1-15
1952A	1-16
2103A	1-17
2138A	1-18
2326A	1-19
2438A	1-20
2550A	1-21

► NEW ITEM

NOTE

Manual change supplements are revised as often as necessary to keep manuals as current and accurate as possible. Hewlett-Packard recommends that you periodically request the latest edition of this supplement. Free copies are available from all HP offices. When requesting copies quote the manual identification information from your supplement, or the model number and print date from the title page of the manual.

ERRATA

Page 1-2, Paragraph 1-20A:

Add new paragraph 1-20A as follows:

1-20A. Option 910. Option 910 provides an extra Operating and Service Manual with the instrument.

Page 1-3, Table 1-1, SPECIFICATIONS AMPLITUDE:

Under Amplitude Accuracy, Switching Between Bandwidths, change "20 degrees C" to "25 degrees C."

Page 1-3, Table 1-1, SPECIFICATIONS FREQUENCY:

Change Bandwidth Selectivity specification to read:

60 dB/3 dB IF bandwidth ratio <11:1 for IF bandwidths from 30 Hz to 3 kHz and <20:1 for IF bandwidths from 10 kHz to 300 kHz, 60 dB points separated by <100 Hz for 10 Hz bandwidths.

Page 1-5, Table 1-2:

Change Extender Board HP Part Number to 5060-0050, Check Digit 3.

Page 4-1, Paragraph 14:

Change the INPUT ATTENUATOR setting to 20 dB.

Page 4-6, Paragraph 4-23:

In step 5, change the test limits to be between 676 mV and 724 mV.

Page 4-10, Paragraph 4-25:

In step 1, change the LOG REF LEVEL setting to read -20 dBm.

Page 4-11, Paragraph 4-26, PERFORMANCE TESTS:

Change "20 degrees C" (SPECIFICATION at top of page) to "25 degrees C."

► Page 4-14, Paragraph 4-28:

Add the following to the existing performance test:

"7. Slower sweep times can be verified by using a lower frequency source or a stopwatch."

Page 5-5, Paragraph 5-28, Step 3:

Change last sentence in step 3 to read: "Rise time should be 50 \pm 4 msec."

► Page 5-7, Paragraph 5-29:

Add the following to the end of step 7:

"Sweep times of .2-10 sec may be adjusted by changing factory-selectable capacitor A6C13, which pads A6C14."

Page 5-13, Paragraph 5-31, Step 12:

Change last sentence in step 12 to read: "The dc level should measure less than +6 mVdc (i.e., between zero and +6 mVdc)."

Page 5-24:

Change dB and dBm levels in step 18 table as shown in Table P/O Paragraph 5-36, Step 18, included in this Manual Changes supplement.

Page 5-31, Figure 5-13:

Change "600 MHz" to "600 kHz."

Page 5-39, Table 5-4:

Add to Table 5-4:

Component A2A1L3; Service Sheet 6; Basis of Selection-Adjusts 300 kHz bandpass filter center frequency. Possible values: 52.3 uH and 53.4 uH.

Add to Table 5-4:

Components A5R35, R40, and R41; Service Sheet 5; Basis of Selection-Adjusts gain

of shaping circuit for greater 2 MHz VTO tuning range.

Page 6-5, Table 6-3:

Change A1Q1 through A1Q4 to HP Part Number 1854-0404, Check Digit 0, TRANSISTOR NPN SI TO-18 PD=360MW.

Add to description of A1R7: FACTORY SELECTED PART.

Change A1R7*, R16*, and R25* to HP Part Number 0757-0420, Check Digit 3, RESISTOR 750 1% .125W F TC=0-100.

Add to description of A1R25: FACTORY SELECTED PART; TYPICAL VALUE SHOWN.

Page 6-6, Table 6-3:

Delete A2, HP Part Number 08552-60139, EXCHANGE ASSEMBLY 3 MHz AMPLIFIER.

Change A2C10 to HP Part Number 0160-3451, Check Digit 1.

Page 6-7, Table 6-3:

Change A2R18 to HP Part Number 0757-0460, Check Digit 1, RESISTOR 61.9K 1% .125W TC=0-100.

Change description of A2A1L3 to: COIL/CHOKE 52.3 UH 1% (FACTORY SELECTED PART: ALTERNATE VALUE. HP Part Number 9140-0136, Check Digit 0, 53.4 UH).

Page 6-8, Table 6-3:

Delete A3, HP Part Number 08552-60140, EXCHANGE ASSEMBLY 50 MHz CONVERTER.

Page 6-9, Table 6-3:

Change A3A2Q1 to HP Part Number 1854-0485, Check Digit 7, TRANSISTOR NPN SI TO-104 PD=175MW.

Delete A4, HP Part Number 08552-60141, EXCHANGE ASSEMBLY CRYSTAL FILTER.

Page 6-10, Table 6-3:

Change A4C14 to HP Part Number 0160-3451, Check Digit 1.

Page 6-12, Table 6-3:

Change A4R25 to HP Part Number 0698-7267, Check Digit 4, R:FXD FLM 19.6K OHM 2% 1/8W (FACTORY SELECT).

Change A4R26 to HP Part Number 0698-7275, Check Digit 4, R:FXD FLM 42.4K OHM 2% 1/8W (FACTORY SELECT).

Page 6-13, Table 6-3:

Change A4R44, A4R70 and A4R81 to HP Part Number 0698-7269, Check Digit 6, R:FXD FLM 23.7K OHM 2% 1/8W (FACTORY SELECT).

Change A4R45, A4R71, and A4R82 to HP Part Number 0698-7277, Check Digit 6, R:FXD FLM 51.1K OHM 2% 1/8W (FACTORY SELECT).

Page 6-14, Table 6-3:

Change A5CR4 and A5CR10 to HP Part Number 1884-0244, Check Digit 9, RECTIFIER: SILICON CONTROLLED.

Page 6-15, Table 6-3:

Change A5Q23 to HP Part Number 1854-0882, Check Digit 8, TRANSISTOR NPN PD=300MW FT=200MHz. (Recommended replacement.)

Change A5Q26 to HP Part Number 1854-0637, Check Digit 1, TRANSISTOR NPN 2N2219A SI TO-5 PD=800MW. (Recommended replacement.)

Change A5R35 to HP Part Number 0757-0464, Check Digit 5, RESISTOR 90.9K 1% .125W. Place an asterisk (*) by A5R35, indicating a factory-selected value.

Change A5R40 to HP Part Number 0698-3457, Check Digit 6, RESISTOR 316K 1% .125W. Place an asterisk (*) by A5R40, indicating a factory-selected value.

Change A5R41 to HP Part Number 0698-3454, Check Digit 3, RESISTOR 215K 1% .125W. Place an asterisk (*) by A5R41, indicating a factory-selected value.

Page 6-16, Table 6-3:

Change A6C8 and A6C22 to HP Part Number 0180-2620, Check Digit 6, C-F 2.2UF 50VDC TA.

Change A6CR4 to HP Part Number 1901-0025, Check Digit 2, DIODE SILICON 100MA/1V.

Page 6-17, Table 6-3:

Change A6Q9 to HP Part Number 1854-0882, Check Digit 8, TRANSISTOR NPN PD=300MW FT=200MHz. (Recommended replacement.)

Add an asterisk (*) to A6R14 to identify it as a factory-select resistor.

Change A6R14 to HP Part Number 0757-0279, Check Digit 0, R:FXD MET FLM 3.16K OHM 1% 1/8W.

Page 6-18, Table 6-3:

Change A6R57 to HP Part Number 0698-7237, Check Digit 8, RESISTOR 1.1K 1% .05W F TC=0+-100 (OPT H01, H02 only).

Change A6R58 to HP Part Number 0698-7209, Check Digit 4, RESISTOR 75 1% .05W F TC=0+-100 (OPT H01, H02 only).

Change A7CR3 to HP Part Number 1901-0050, Check Digit 3, DIODE-SWITCHING 80V 200MA 2NS DO-35.

Change A7Q4-A7Q9, and A7Q13 to HP Part Number 1854-0079, Check Digit 5, TRANSISTOR NPN 2N3439 SI TO-5 PD=1W. (Recommended replacement.)

Page 6-19, Table 6-3:

Change A7Q14 to HP Part Number 1854-0079, Check Digit 5, TRANSISTOR NPN 2N3439 SI TO-5 PD=1W. (Recommended replacement.)

Change A7R21 to HP Part Number 0757-0200, Check Digit 7, RESISTOR 5.62K 1% .125W F TC=0+-100.

Pages 6-20 and 6-21, Table 6-3:

Change A8Q1 through Q24 and A8Q27 to HP Part Number 1854-0215, Check Digit 1.

Page 6-21, Table 6-3:

Change description of A8R51, HP Part Number 0698-3440, Check Digit 7, to read: R:FXD 196 OHM 1% 1/8W (DELETE FOR H01, H02, and H04).

Add second A8R51, HP Part Number 0698-3444, Check Digit 1, RESISTOR 316 1% .125W F TC=0+-100 (OPT H04 only).

Page 6-22, Table 6-3:

Change A9C5 to HP Part Number 0160-3501, Check Digit 2, CAPACITOR-FXD 4UF +-10% 50VDC MET-POLYC.

Change A10R7 to HP Part Number 0757-0438, Check Digit 3, R:FXD MET FLM 5.11K OHM 1% .12W.

Change A10R8 to A10R8*, HP Part Number 0757-0440, Check Digit 7, R:FXD MET 7.50K OHM 1% 1/8W (FACTORY SELECTED PART).

Change A10R9 to A10R9*, HP Part Number 0698-3158, Check Digit 4, R:FXD MET FLM 23.7K OHM 1% 1/8W (FACTORY SELECTED PART).

Page 6-23, Table 6-3:

Delete A12, HP Part Number 08552-60145, EXCHANGE ASSEMBLY 47MHz APC.

Change A12E1 and A12E2 to HP Part Number 0955-0078, Check Digit 7.

Page 6-24, Table 6-3:

Change A13Q1 to HP Part Number 1853-0451, Check Digit 5, TRANSISTOR PNP 2N3799 SI TO-18 PD=360MW.

Page 6-25, Table 6-3:

Change C6 and C7 to HP Part Number 0160-3036, Check Digit 3, CAPACITOR-FDTHRU 5000PF +80 -20% 200V. (Recommended replacement.)

► Change Q23 and Q24 to HP Part Number 0340-1150, Check Digit 5, INSULATOR:TSTR FOR TO-66.

Page 6-26, Table 6-3:

Change W1 to HP Part Number 08552-20095, Check Digit 4, CABLE: LOG AMPLIFIER.

Change W2 to HP Part Number 08552-20094, Check Digit 3, CABLE: CRYSTAL FILTER.

Change XA1, 2, 4, and 8 to HP Part Number 1251-0160, Check Digit 7, CONNECTOR-PC

Page 6-26, Table 6-3, MISCELLANEOUS:

Change first entry (KNOB, ROUND ...) to HP Part Number 0370-3057, Check Digit 8.

Page 6-27/6-28, Table 6-3:

Delete entry for HP Part Number 08552-00104.

Delete entry for HP Part Number 08552-00106.

Delete HP Part Number 08552-00108, BRACE.

Page 7-23, Table 7-4:

Add second entry for A3A2Q1: HP Part Number 1854-0485, Check Digit 7, TSTR: SI NPN
(ALTERNATE for 1854-0238, Check Digit 8).

Page 8-19, Figure 8-8:

In photo entitled "INSIDE FRONT PANEL," add callout A10R10 as shown on Figure 8-8 in this Manual Changes supplement.

In photo entitled "TOP," callout W2 between XA1 and XA2 should be W12.

Page 8-22, Figure 8-13:

Reverse polarity of C3 on A9 Scan Time Switch Assembly.

Page 8-23, Table 8-7:

Change wire color code for P1 pin 12 from 5 to 9.

Change wire color code for P1 pin 24 from 9 to 5.

Page 8-25, Figure 8-18:

Change A3A2Q1 to HP Part Number 1854-0485.

Page 8-27, Figure 8-19, SERVICE SHEET 4:

Change C10 (FAR LEFT) to C11.

Page 8-27, Figure 8-20, SERVICE SHEET 4:

Change R19 (above Q3) to R14.

Page 8-27, Figure 8-21, SERVICE SHEET 4:

Change A13Q1 to HP Part Number 1853-0451.

Page 8-29, Figure 8-22, SERVICE SHEET 5:

R15 (below R46) should be labeled C15.

Page 8-29, Figure 8-23, SERVICE SHEET 5:

On A9, P/O Scan Time Switch Assembly, change value of C5 to 4uF.

On A5, place an asterisk (*) by A5R35, R40, and R41.

Change the value of A5R35 to 90.9K ohms.

Change the value of A5R40 to 316K ohms.

Change the value of A5R41 to 215K ohms.

Page 8-31, Figure 8-24:

Change "COVER A2A1MP2" to read "CAN A2A1MP1."

Page 8-31, Figure 8-25, SERVICE SHEET 6:

Delete pF from value of L12.

Change the reference designator for A2A1L3 to L3* (FACTORY SELECTED PART).

Page 8-33, Figure 8-27:

Change value of R36 to 61.9.

Page 8-35, Figure 8-29, SERVICE SHEET 8:

Change A1R7 to A1R7* (FACTORY SELECTED PART).

Change A1R7*, R16, and R25* to 750.

Change A1R25 to A1R25* (FACTORY SELECTED PART).

Change HP Part Number of A1Q1 through A1Q4 to 1854-0404.

Page 8-39, Figure 31:

Change R19 (upper right hand corner between R12 and R15) to R9.
Capacitor immediately below L2 should be labeled C4.

Page 8-39, Figure 8-32:

At A4R6, change "+20VF" to "+20 VF1."

Page 8-41, Figure 8-33, SERVICE SHEET 11:

Unlabeled capacitor (lower right hand corner, above C95) is C72.
Change R112 (between R118 and C86) to R122.
Resistor immediately to left of Q13 should be labeled R74.
Resistor immediately to left of R73 through R78 should be labeled R76.

Page 8-41, Figure 8-34, SERVICE SHEET 11:

Change value of A10R8* to 7.5K.
Change value of A10R9* to 23.7K.

Page 8-43, Figure 8-36:

Reverse position of A8R8 and A8R10 on A8 component identification diagram.

Page 8-47, Figure 8-41, SERVICE SHEET 14:

Change A7Q4-A7Q9, A7Q13, and A7Q14 to 1854-0079.
Change value of R21 to 5.62K.

Page 8-49, Figure 8-42:

Add A6C13 above A6C10 on A6 component identification diagram.

Page 8-49, Figure 8-43:

Change A6C8 and A6C22 to 2.2UF. (Recommended replacement.)
Change A6Q9 to 1854-0882.
Add an asterisk (*) to A6R14 to identify it as a factory-select resistor.
Change A6R14 value to 3.16K.
On A6 Scan Generator Assembly schematic, add a note under A6C13*: (A6C13 is not always loaded.)

Page 8-51, Figure 8-44:

Change C4 to C6.

Page 8-51, Figure 8-45:

Change A6C4 to A6C6.

Page 8-53, Figure 8-47:

Change A5Q26 to HP Part Number 1854-0637.

Page 8-57, Figure 8-51:

Change A5Q23 to 1854-0882. (Recommended replacement.)

CHANGE 1

Page 6-14, Table 6-3:

Change A4R122 to FACTORY SELECTED PART. TYPICAL VALUE SHOWN.

Page 6-17, Table 6-3:

Change A6R29 to HP Part Number 0698-0083, Check Digit 8, 1.96K.
Change A6R39 to HP Part Number 0698-3159, Check Digit 5, 19.6K.

Page 8-41, Figure 8-34, SERVICE SHEET 11:

Change R122 to R122*.

Page 8-49, Figure 8-43, SERVICE SHEET 15:

Change A6R29 to 1.96K.
Change A6R39 to 19.6K.

CHANGE 2

Page 6-12, Table 6-3:

Change A4R33 to FACTORY SELECTED PART. TYPICAL VALUE SHOWN.
Change A4R36 to FACTORY SELECTED PART. TYPICAL VALUE SHOWN.

Page 6-13, Table 6-3:

Change A4R52 to FACTORY SELECTED PART. TYPICAL VALUE SHOWN.
Change A4R55 to FACTORY SELECTED PART. TYPICAL VALUE SHOWN.
Change A4R66 to FACTORY SELECTED PART. TYPICAL VALUE SHOWN.
Change A4R68 to FACTORY SELECTED PART. TYPICAL VALUE SHOWN.
Change A4R92 to FACTORY SELECTED PART. TYPICAL VALUE SHOWN.
Change A4R96 to FACTORY SELECTED PART. TYPICAL VALUE SHOWN.
Change A4R108 to FACTORY SELECTED PART. TYPICAL VALUE SHOWN.
Change A4R112 to FACTORY SELECTED PART. TYPICAL VALUE SHOWN.

Page 8-39, Figure 8-32, SERVICE SHEET 10:

Change A4R33 to A4R33* 1.33K.
Change A4R52 to A4R52* 1.33K.
Change A4R66 to A3R66* 1.33K.
Change A4R36 to A4R36* 6.19K.
Change A4R55 to A4R55* 6.19K.
Change A4R68 to A4R68* 6.19K.

Page 8-41, Figure 8-34, SERVICE SHEET 11:

Change A4R92 to A4R92* 1.33K.
Change A4R96 to A4R96* 6.19K.
Change A4R108 to A4R108* 1.33K.
Change A4R112 to A4R112* 6.19K.

CHANGE 3

Page 6-26, Table 6-3:

Change S1 to HP Part Number 3101-1327, Check Digit 5.

CHANGE 4

Page 6-6, Table 6-3:

Change A2Q1 to HP Part Number 1854-0404, Check Digit 0, TSTR: SI NPN TO-18 PD=360MW.

Page 6-8, Table 6-3:

Change A3R9* to HP Part Number 0698-3435, Check Digit 0, R:FXD MET FLM 38.3 OHM 1% 1/8W.

CHANGE 5

Page 6-26, Table 6-3:

Change HP Part Number 08552-0016 to 08552-00037, Check Digit 2.
Change HP Part Number 08552-0015 to 08552-00036, Check Digit 1.
Change HP Part Number 08552-0014 to 08552-00035, Check Digit 0.
Change HP Part Number 08552-02002 to 08552-00038, Check Digit 3.
Change HP Part Number 08552-0027 to 08552-00039, Check Digit 4.

CHANGE 6

Page 6-8, Table 6-3:

Change A3T2 to HP Part Number 08552-80003, Check Digit 0.

CHANGE 7

Page 6-25, Table 6-3:
Change socket for Q23 to HP Part Number 1200-1029, Check Digit 2, SOCKET:
TRANSISTOR.
Change socket for Q24 to HP Part Number 1200-1029, Check Digit 2, SOCKET:
TRANSISTOR.

Page 6-26, Table 6-3:
Change 08552-0025 QTY to 2.

CHANGE 8

Page 6-16, Table 6-3:
Change A5U1 and A5U2 to HP Part Number 1826-1058, Check Digit 3.

Page 6-18, Table 6-3:
Change A6U1 and A6U2 to HP Part Number 1826-1058, Check Digit 3.

Page 6-23, Table 6-3:
Change A12U1 to HP Part Number 1826-1058, Check Digit 3.

NOTE

The 1826-1058 is a high reliability replacement for the 1826-0013.

CHANGE 9

Page 6-22, Table 6-3:
Add A8R99, HP Part Number 0698-0084, Check Digit 9, R:FXD MET FLM 2.15K OHM 1% 1/8W

Page 8-45, Figure 8-39, SERVICE SHEET 13:
Add A8R99 2.15K, on A8 LOG AMPLIFIER ASSY, between XA8 pin 8 and XA8 pin 9.
Connection XA8 pin 9 is on SERVICE SHEET 12.

CHANGE 10

Page 1-6, Table 1-2:
Change Tuning Tool, Slot, Nonmetallic, 2.5 shaft to HP Part Number 8710-0772, Check Digit 8.

Page 5-14, Paragraph 5-32:
Under EQUIPMENT, change TUNING TOOL to HP Part Number 8710-0772, Check Digit 8.

Page 5-15, Paragraph 5-33:
Under EQUIPMENT, change TUNING TOOL to HP Part Number 8710-0772, Check Digit 8.

Page 6-7, Table 6-2:
Change A2A1L2 to HP Part Number 08552-80107, Check Digit 5.

Page 6-8, Table 6-3:
Change A2A1L4 to HP Part Number 08552-80106, Check Digit 4.

CHANGE 11

Page 6-20, Table 6-3:
Change A8CR5 to HP Part Number 1901-1067, Check Digit 4.
Add A8CR6, HP Part Number 1901-1067, Check Digit 4, DIODE: SILICON.

Page 8-45, Figure 8-39, SERVICE SHEET 13:
Add A8CR6 in parallel with A8L11 so that the anode of A8CR6 is connected to the anode of A8CR5 (XA8-pin 7).

CHANGE 12

Page 6-5, Table 6-3:

Add to Description for A1R4: (FACTORY SELECT).

Change A1R12, A1R21, and A1R30 to HP Part Number 0757-0434, Check Digit 9, R:FXD MET FLM 3.65K OHM 1% 1/8W (FACTORY SELECT).

Page 8-35, Figure 8-29, SERVICE SHEET 8:

Change reference designator and value of A1R12 to R12*, 3.65K.

Change reference designator and value of A1R21 to R21*, 3.65K.

Change reference designator and value of A1R30 to R30*, 3.65K.

CHANGE 13

Page 6-16, Table 6-3:

Change A6CR12 to HP Part Number 1902-3139, Check Digit 7, DIODE-ZNR 8.25V 5% DO-7 PD=.4W TC=.053%. NOTE: IN INSTRUMENTS WITH SERIAL PREFIX 1841A OR HIGHER, PREFERRED REPLACEMENT FOR A6CR12 IS HP PART NUMBER 1902-0994, Check Digit 6 (see CHANGE 14).

Add A6CR17, HP Part Number 1901-0539, Check Digit 3, D SCH 20V.

Page 6-18, Table 6-3:

Add A6R63, HP Part Number 0757-0280, Check Digit 3, R:FXD MET FLM 1K 1% 1/8W.

Page 8-49, Figure 8-42, SERVICE SHEET 15:

Add new components as shown in Figure 8-42 of this change sheet.

Page 8-49, Figure 8-43, SERVICE SHEET 15:

Add A6CR17 and A6R63 as shown in Figure 8-43 of this change sheet. Change breakdown voltage of A6CR12 from 9V to 8.25V.

Add CR17 and R63 to REFERENCE DESIGNATIONS table under A6.

CHANGE 14

Page 6-16, Table 6-3:

Change A6CR12 to HP Part Number 1902-0994, Check Digit 6, DIODE-ZNR 8.2V 1% PD=.4W.

CHANGE 15

Page 6-8, Table 6-3:

Change A3R9* to HP Part Number 0698-3434, Check Digit 9, RESISTOR 34.8 1% .125W F TC=0+-100 (see CHANGE 4).

Change A3R11 to A3R11*.

Change A3R12 to A3R12*.

Change A3R13 to A3R13*.

Change A3R14 to A3R14*.

Change A3A1C3 to HP Part Number 0160-3046, Check Digit 0, CAPACITOR-FXD 250 PF+-5% 300 VDC MICA.

Change A3A1C12 to HP Part Number 0140-0198, Check Digit 5, CAPACITOR-FXD 200 PF+-5% 300 VDC MICA.

Page 8-25, Figure 8-18, SERVICE SHEET 3:

Change value of A3R9* to 34.8.

Change A3R11 to A3R11*; A3R12 to A3R12*; A3R13 to A3R13*; A3R14 to A3R14*.

Change value of A3A1C3 to 250 pF.

Change value of A3A1C12 to 200 pF.

CHANGE 16

Page 6-25, Table 6-3:

Change Q24 to HP Part Number 1854-0311, Check Digit 8, TRANSISTOR NPN 2N4240 SI TO-66 PD=35W. (Recommended replacement.)

Page 8-57, Figure 8-51:

Change part number of +20V power supply transistor Q24 to 1854-0311. (Recommended replacement.)

CHANGE 17

Page 6-19, Table 6-3:

Change A8 to HP Part Number 08552-60192, Check Digit 6, BOARD ASSY: LOG AMPL (DELETE FOR OPT HP1-02). (Recommended replacement.)

Page 8-43, Figure 8-37:

Change part number of LOG AMPLIFIER ASSY A8 to 08552-60192. At lower left of schematic, under -100V line, add new input line: -100VF1, wire 97, pin 3. On-board connection is common to L5 and C4.

Page 8-45, Figure 8-39:

Change part number of LOG AMPLIFIER ASSY A8 to 08552-60192.
At bottom of schematic, to left of -100VF1, change wire 7 to wire 97.

CHANGE 18

Page 6-14, Table 6-3:

Change A4R133 to HP Part Number 2100-2574, Check Digit 9.

Page 6-27/6-28, Table 6-3:

Add HP Part Number 08552-00047, Check Digit 4, STIFFENER BRACKET.

CHANGE 19

Page 5-14, Paragraph 5-32:

In step 4, add A2A1C5 to adjustable components.

Page 6-7 and 6-8, Table 6-3:

Change A2A1 to HP Part Number 08552-60196, Check Digit 0, BOARD ASSEMBLY: 300 KHz.
Change A2A1C1 to HP Part Number 0160-2208, Check Digit 4, CAPACITOR-FXD 330PF +5% 300VDC MICA.

Change A2A1C2 to HP Part Number 0160-5715, Check Digit 4, CAPACITOR-FXD 2400PF +5% 50VDC CER.

Change A2A1C3 to HP Part Number 0160-2307, Check Digit 4, CAPACITOR-FXD 47PF +5% 300VDC MICA.

Change A2A1C4 to HP Part Number 0160-4904, Check Digit 1, CAPACITOR-FXD 6800PF +5% 50VDC CER.

Add A2A1C5, HP Part Number 0121-0060, Check Digit 0, V TRMR-CER 2-8PF 350V PC-MTG.

Change A2A1L1 to HP Part Number 9100-2474, Check Digit 9, INDUCTOR RF-CH-MLD 5.6UH 1% .166DX.385LG.

Change A2A1L2 to HP Part Number 08552-80109, Check Digit 7, INDUCTOR: 300 KHZ FILTER #2.

Change A2A1L3 to HP Part Number 9100-1631, Check Digit 8, INDUCTOR RF-CH-MLD 56UH 5% .166DX.385LG.

Change A2A1L4 to HP Part Number 08552-80108, Check Digit 6, INDUCTOR: 300KHZ FILTER #1.

Change A2A1MP1 to HP Part Number 08552-00167, Check Digit 9, FILTER CAN ASSY:300 KHZ.

Page 8-31, Figure 8-24:

Replace small A2A1 board in upper left corner of component locations diagram with new A2A1 component locations as shown in P/O Figure 8-24 (CHANGE 19) in this Manual Changes supplement.

Page 8-31, Figure 8-25:

In A2A1, 3MHz BPF:

Replace the A2A1 portion of the schematic diagram with the new A2A1 schematic (P/O 3 MHz Amplifier, 1 of 2) located in this Manual Changes supplement.
In lower left corner of Figure 8-25, change the SERIAL PREFIX to 2326A.

CHANGE 20

Page 6-1, Table 6-1:

Change the New Part No. of the A2 assembly to 08552-60198.

Change the Exchange Part No. of the A2 assembly to 08552-60139.

Page 6-6, Table 6-3:

Change A2 to HP Part Number 08552-60198, Check Digit 2, BOARD ASSY: 3 MHz AMPLIFIER.

Change A2C3 through C5, C10, C12, C17 through C24, C27, C28, C30, C33, C34, C36, C38, C39, C42, and C43 to HP Part Number 0160-4832, Check Digit 4, CAPACITOR-FXD .01UF 10% 100VDC CER.

Page 8-31, Figure 8-24:

Page 8-33, Figure 8-26:

Replace the figure with the new Figure 8-24/8-26 (CHANGE 20) located in this Manual Changes Supplement.

Page 8-31, Figure 8-25:

Page 8-33, Figure 8-27:

In the upper left corner of the schematic, change the part number of the A2 assembly to 08552-60198.

In the lower left corner of the schematic, change the serial prefix to 2438A.

► CHANGE 21

Page 8-29, Figure 8-22:

Page 8-53, Figure 8-46:

Page 8-57, Figure 8-50:

Replace the figure with the new Figure 8-22/8-46/8-50 (CHANGE 21) located in this Manual Changes Supplement.

P/O Paragraph 5-36, Step 18.

Test Attenuator	LOG REF LEVEL	Adjust	Error Limit: ± 2 mVdc (from Reference Voltage)
20 dB	-10 dBm	A1R59	-2 _____ +2
30 dB	-20 dBm	A1R58	-2 _____ +2
40 dB	-30 dBm	A2R21	-2 _____ +2
50 dB	-40 dBm	A2R24	-2 _____ +2
60 dB	-50 dBm	A2R27	-2 _____ +2

INSIDE FRONT PANEL

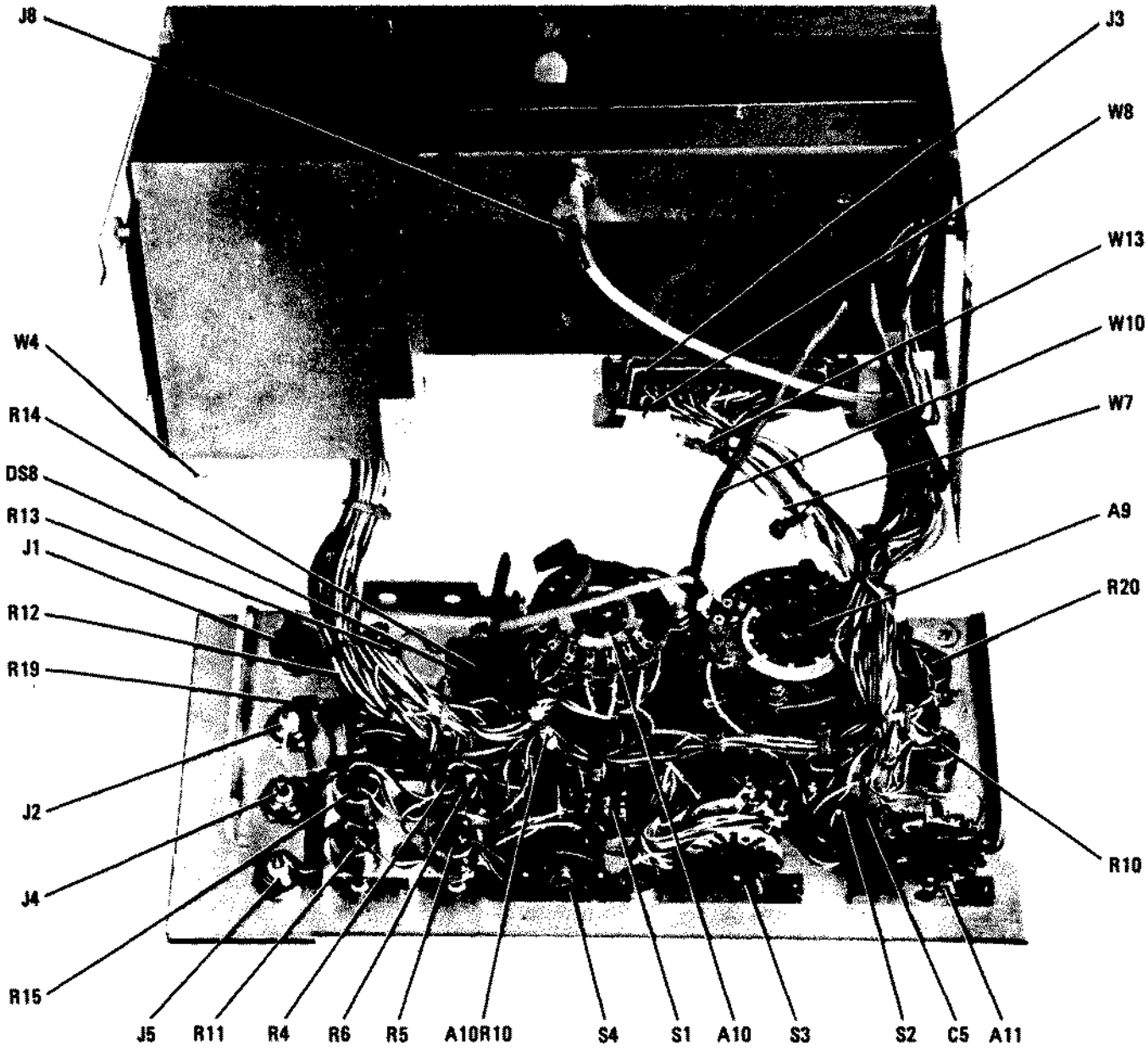
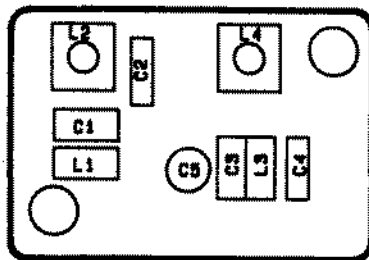


Figure 8-8. P/O 8552B Component. Assembly and Adjustment Locations (ERRATA)

A2A1
3 MHZ BPF



P/O Figure 8-24. P/O 3 MHz Amplifier A2 Component Locations

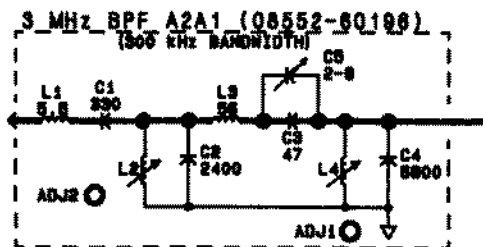


FIGURE 8-25. A2A1 P/O 3 MHz AMPLIFIER (1 OF 2)

A6

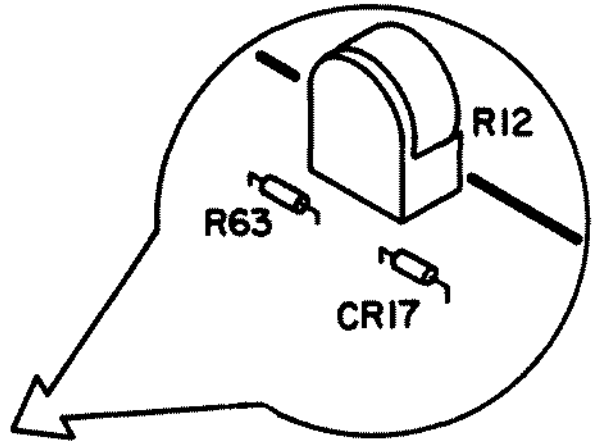
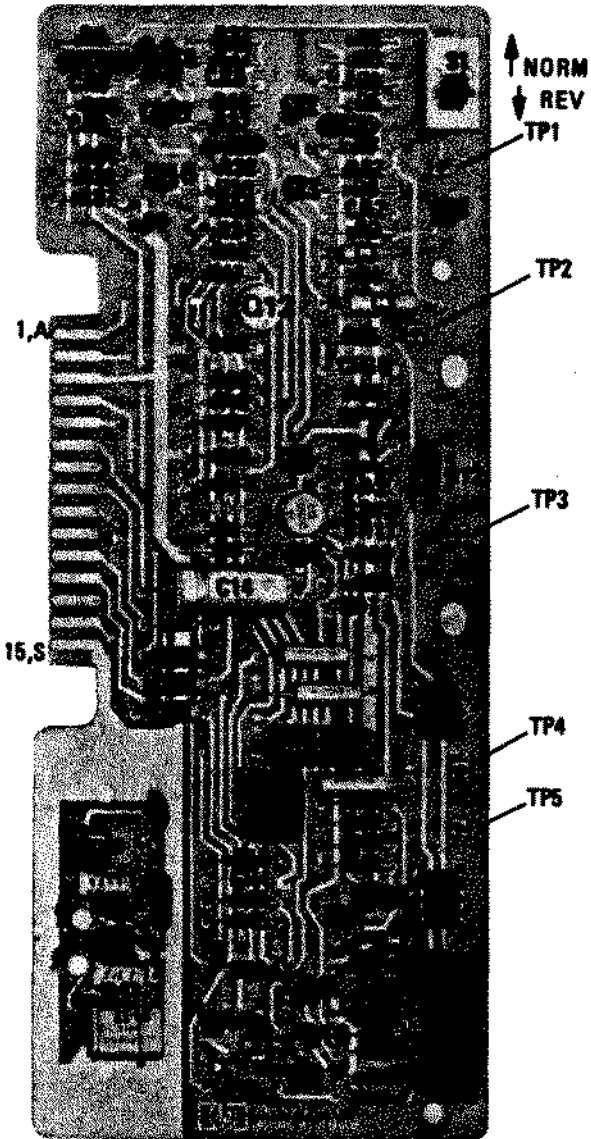


Figure 8-42. P/O Scan Generator A6 Component Identification (CHANGE 13)

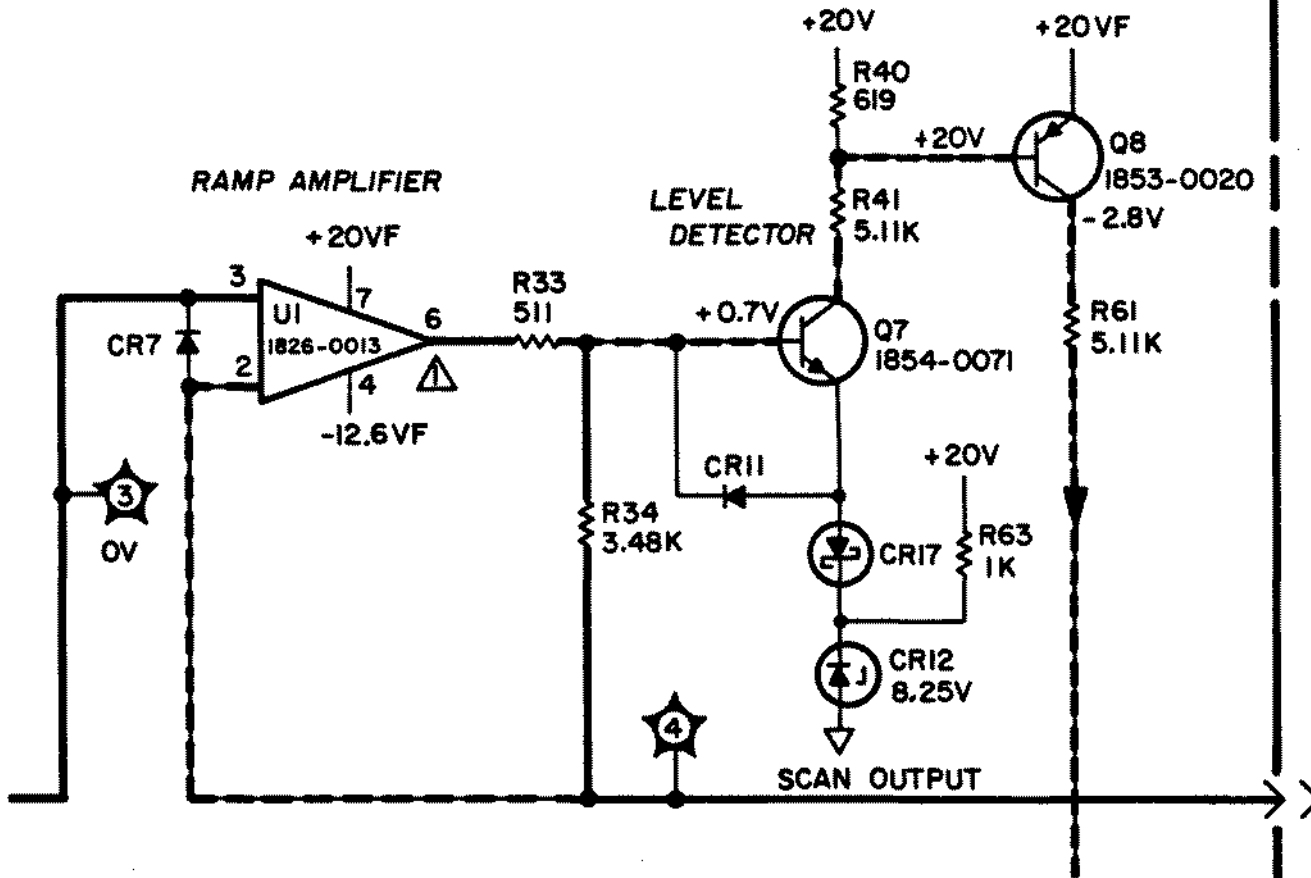


Figure R-13 Scan Generator and Trigger Circuits (CHANGE 13)

A2
 3 MHz AMPLIFIER
 08552-60198

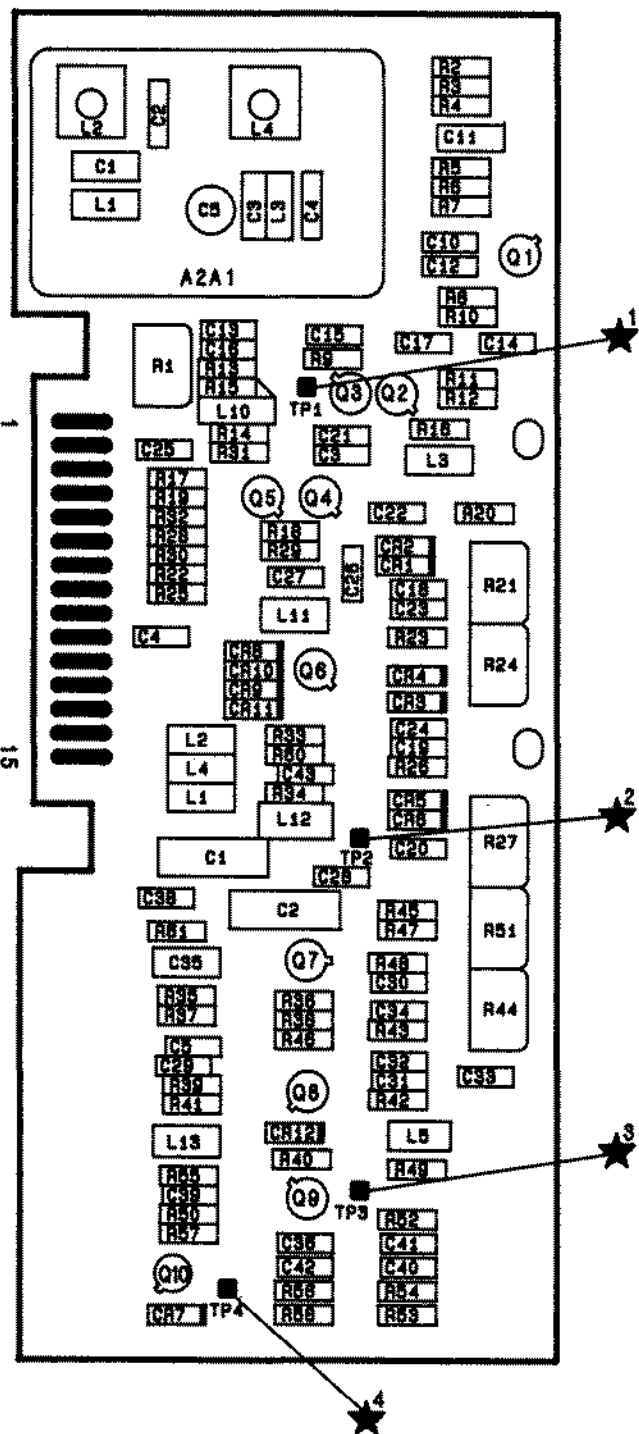
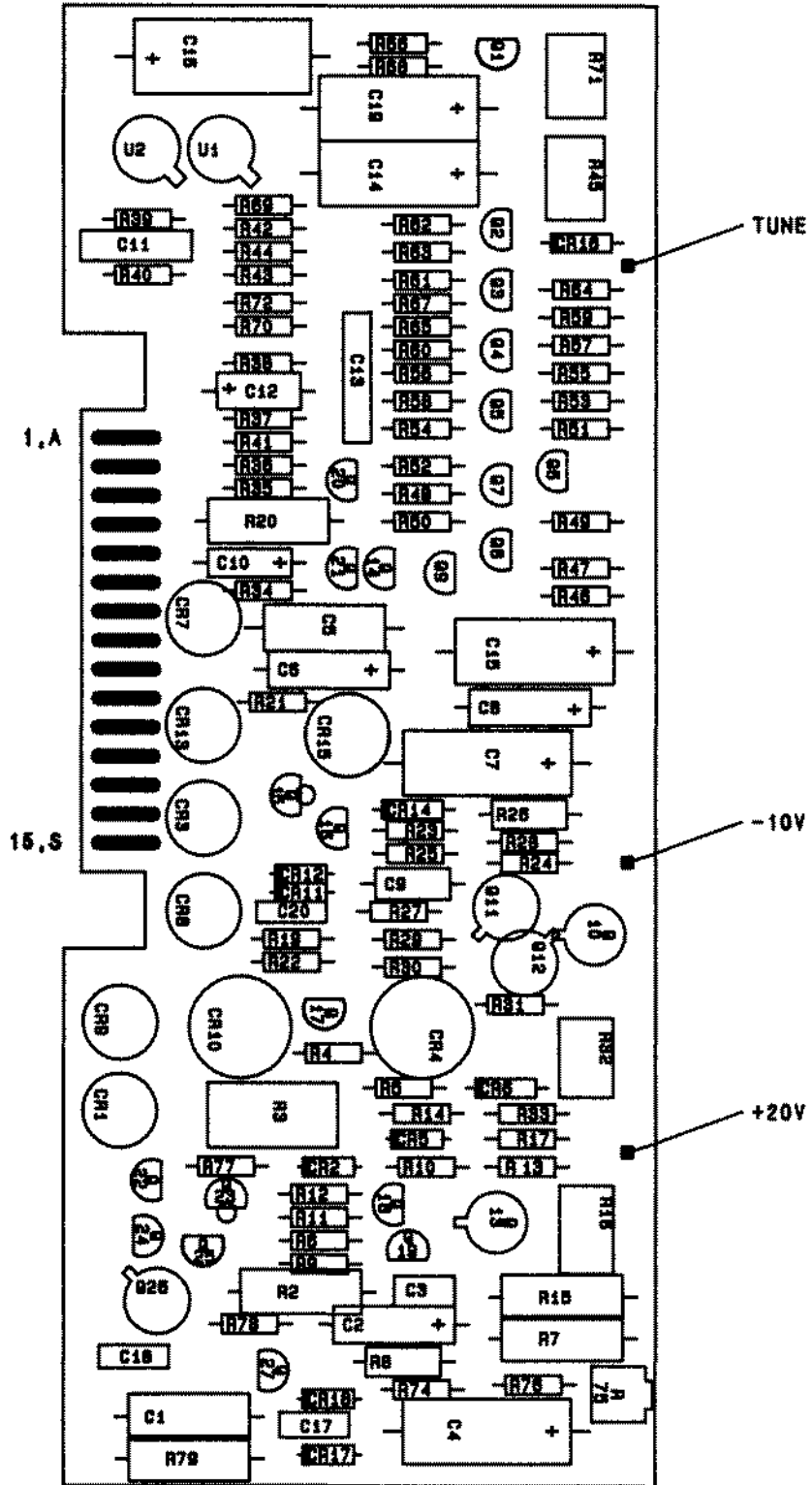


FIGURE 8-24 AND 8-26. P/O 3 MHz AMPLIFIER A2 COMPONENT IDENTIFICATION (CHANGE 20)

A5



FIGURES 8-22, 8-46, AND 8-50.
P/O POWER SUPPLY A5 COMPONENT IDENTIFICATION (CHANGE 21)